

NAP Incl. 2004 - 2006



National Action Plan on Social Inclusion of the Czech Republic



Economic and Social situation in the Czech Republic

Strengths

- on-going GDP growth
- low level of poverty
- low level of poverty considering the 65+ age group
- social protection, education, health care and social services systems designed to prevent social exclusion

Weaknesses

- deficit of public finance
- high concentration of people just above the poverty threshold
- high proportion of long unemployed people (more than 12 months)
- ageing of population



Strategy on Social Inclusion

- linkage of social inclusion strategy on state economic policy, on 4 Government priorities reflecting the tasks included in the Lisbon Strategy in 2004
 - promotion of economic growth and competitiveness
 - employment
 - public finance reform
 - sustainable development
- tight connection with the Statement of the Government of the Czech Republic

4 Government priorities and NAP Incl.

promotion of economic growths
and competitiveness

employment

public finance reform

sustainable development

reducing regional
inequalities

promoting small and
medium-sized business

promoting employability of
vulnerable job applicants

reform of social services
and social support benefit
systems

changes in taxation

emphasis on long-life
learning and modernising
the system of education



Strategy on Social Inclusion

- covers the whole broad frame of poverty and social exclusion
- narrow focus on groups at risk of poverty and social exclusion
 - persons with disabilities
 - children, youth and young adults
 - older people
 - ethnic minorities and immigrants
 - homeless people
 - persons leaving institutions and ex-prisoners



Strategy on Social Inclusion

- next issue of the Strategy is to provide support by means of the best services possible
 - by cooperation with non-profit sector and local authorities to provide services corresponding with local needs
 - by low-threshold centres and field programmes as a child and youth crime prevention
 - by increase of capability to use information technology based on National Programme for Computer Literacy
 - by prevention of domestic violence through the information campaign explaining the impact and seriousness of domestic violence



Key issues

- employability of vulnerable job applicants
- assistance provided to the most vulnerable groups
 - Roma at risk of social exclusion
 - persons with disabilities



Employability of vulnerable job applicants

- New Employment Act entering into force on 1st October 2004
 - Individual Action Plan
 - right to vocational rehabilitation in the place of living
 - extension of support period of older job applicants
 - abolition of restrictions on concurrence of pension and earnings
- Programmes
 - Special
 - First Opportunity
 - New Start



Roma at risk of social exclusion

education

preparatory classes

Measure 3.1 Enhancing the quality of education HRD OP

Programme to Promote Integration of the Roma Community

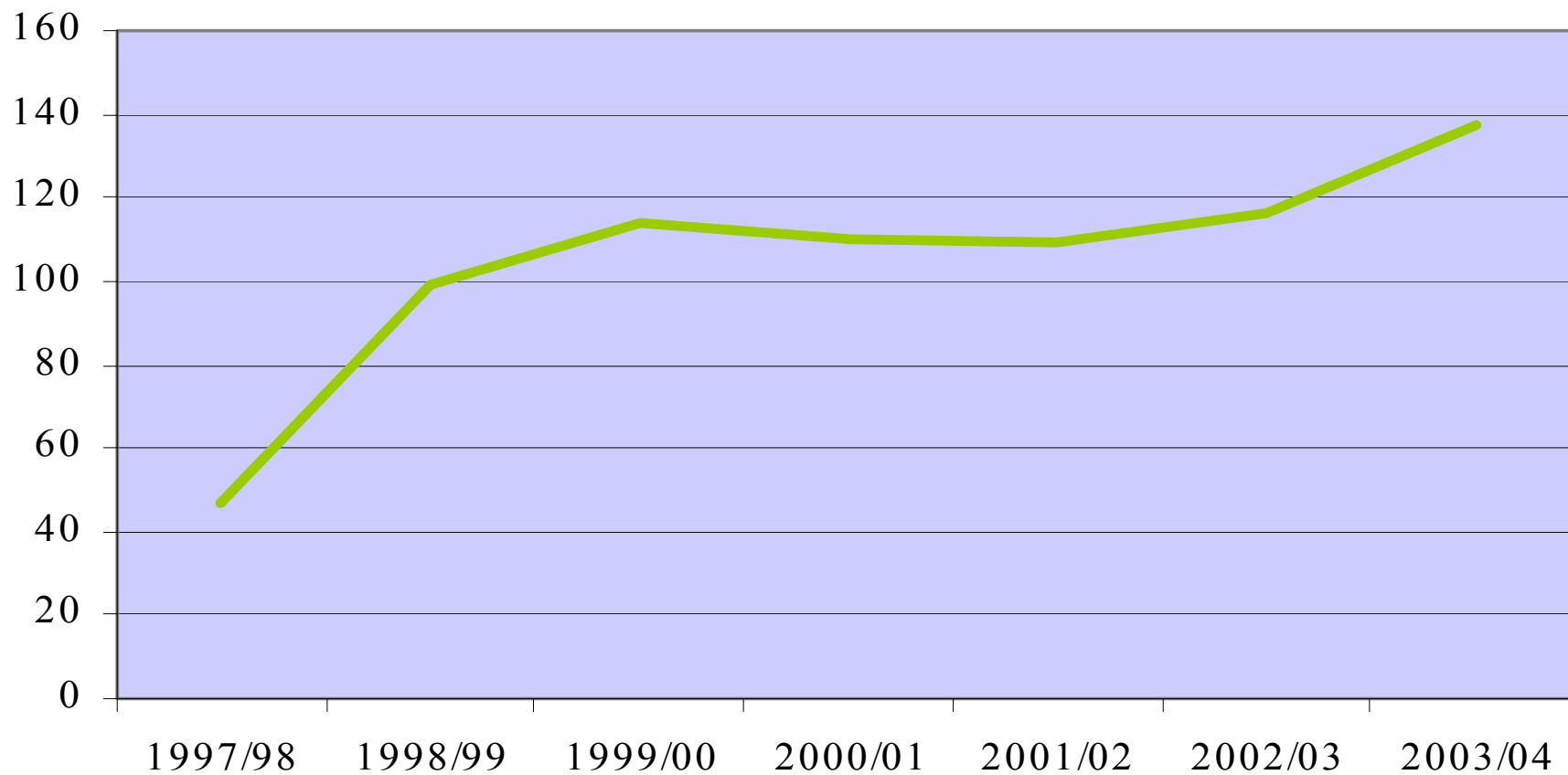
prevention of social negative phenomena

Police Assistant to Combat usury in Socially Excluded Roma Communities

Police Assistant for Cooperation with the Roma Community

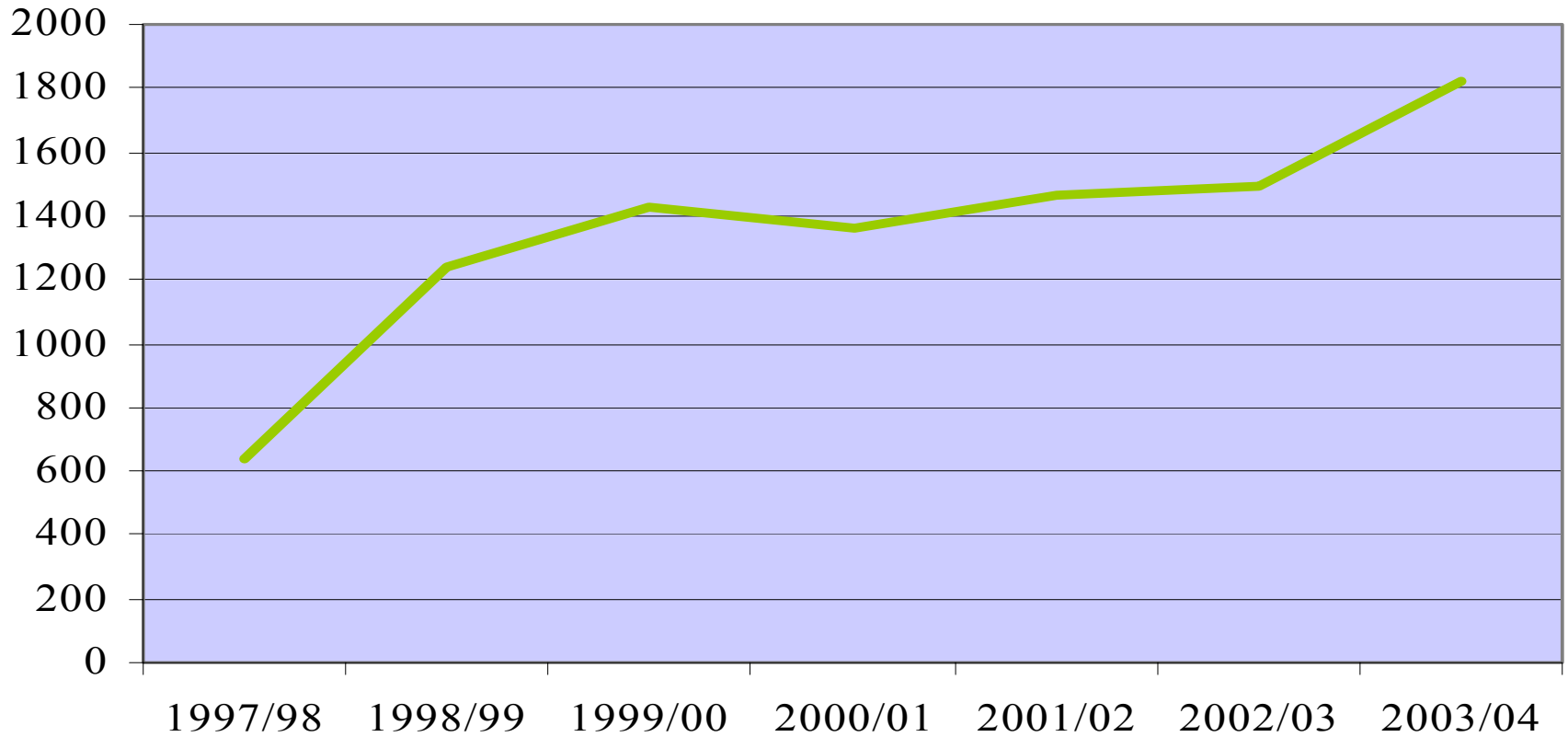
field social work at socially excluded Roma communities

Development of numbers of preparatory classes



MoEYS

Development of numbers of children attending preparatory classes



MoEYS



Persons with disabilities

education



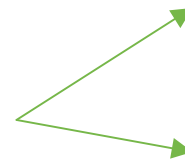
educational intervention and assistance

transport



National Development Programme
Mobility for All

information technology



barrier-free web in civil service institutions and municipalities

publishing Life situations related to people with disabilities on the Public Administration Portal



Participation

- we profited from JIM cooperation by involving the Committee for Elaboration JIM and NAP Incl.
- we extended cooperation with NGOs working with people with experience of poverty (homelessness, seniors)
- we invited representatives of local and regional authorities
- we tried to involve the public

Committee on Elaboration JIM and NAP Incl.

- consisting of
 - 14 representatives of MoLSA based on professional experiences
 - 10 representatives of other ministries
 - 4 representatives of governmental and other institutions
 - 2 representatives of municipalities
 - 3 representatives of NGOs
 - 4 representatives of social partners
 - 2 experts



Gender mainstreaming

- poverty influences women and men in a different way
 - women are at higher risk of poverty women at 65+ age are more at risk of poverty
- we included Gender Analysis in the NAP Incl. through
 - disaggregating of data by gender
 - proposed measures correspond with Government Priorities and Procedures for the Enforcement of the Equality of Men and Women



Conclusion

- contribution of NAP Incl. for the Czech Republic
 - interconnection of the social inclusion policy and employment, housing, education, information technology policy
 - pointing out multi-dimension of poverty
 - contribution of NAP Incl. is also the more developed cooperation between the governmental level and non-profit and public sector on creation of social incl. strategy

data are based on results obtained by the **2002 Microcensus:**

- a research survey conducted by the Czech Statistical Office
 - information on incomes in 2002

Czech Republic:

- low income levels
- very important effect of social transfers
- narrow income distribution

very low at-risk-of-poverty rate (8%)

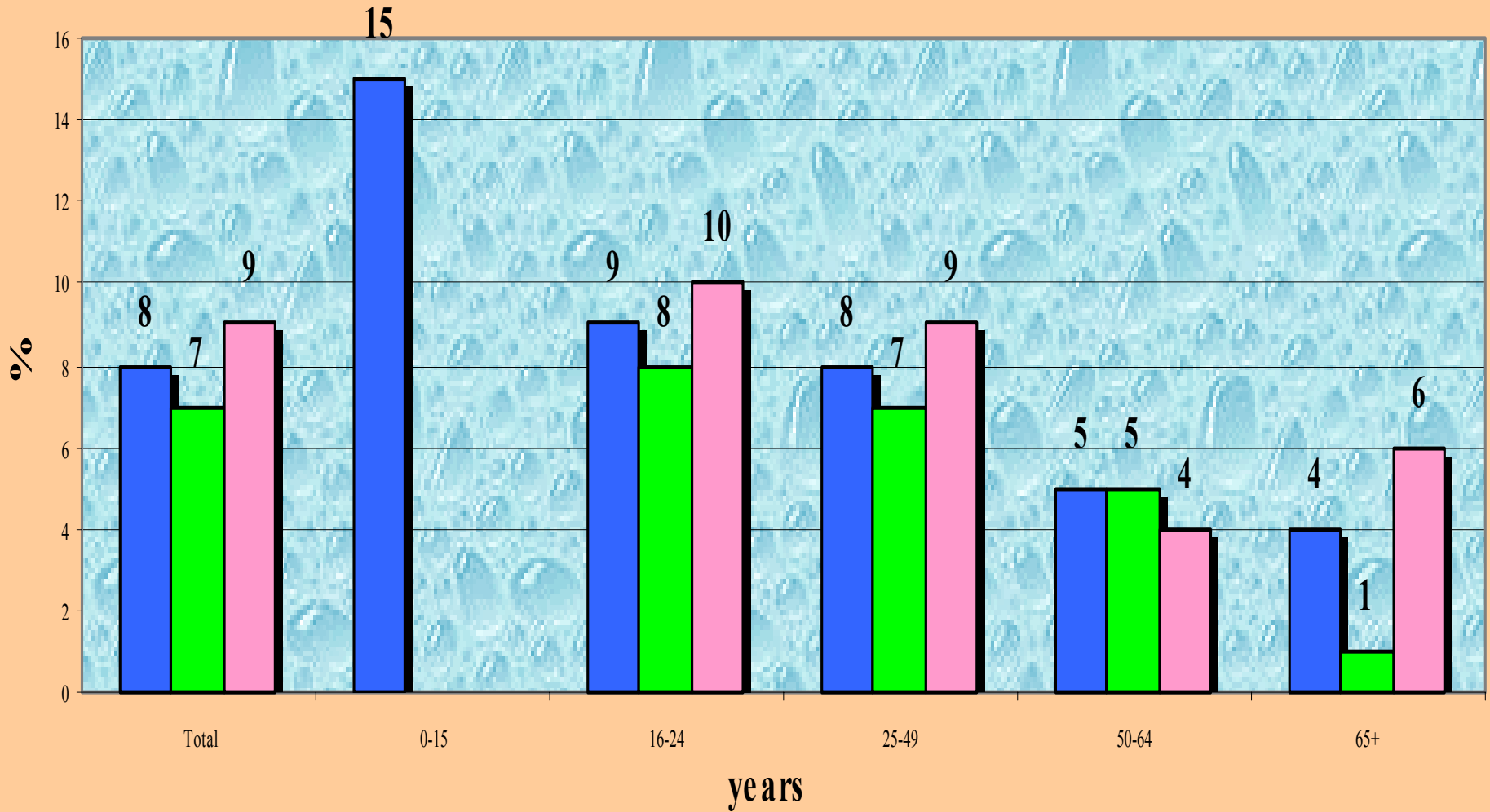
Czech at-risk-of-poverty threshold:

- 1 person household: 73 878 CZK, 2 398 EUR, 4 519 PPS
(54.8% of EU-15 threshold and 139.4% of new EU-10 countries)
- 2 adults with 2 dependent children: 155 144 CZK, 5 036 EUR, 9 490 PPS

the **relative median gap** is low (15%): half of those at-risk-of-poverty had an equivalised income below 85% of the at-risk-of-poverty threshold, resp. below 51% of median equivalised income (62 797 CZK, 2 039 EUR, 3 841 PPS)

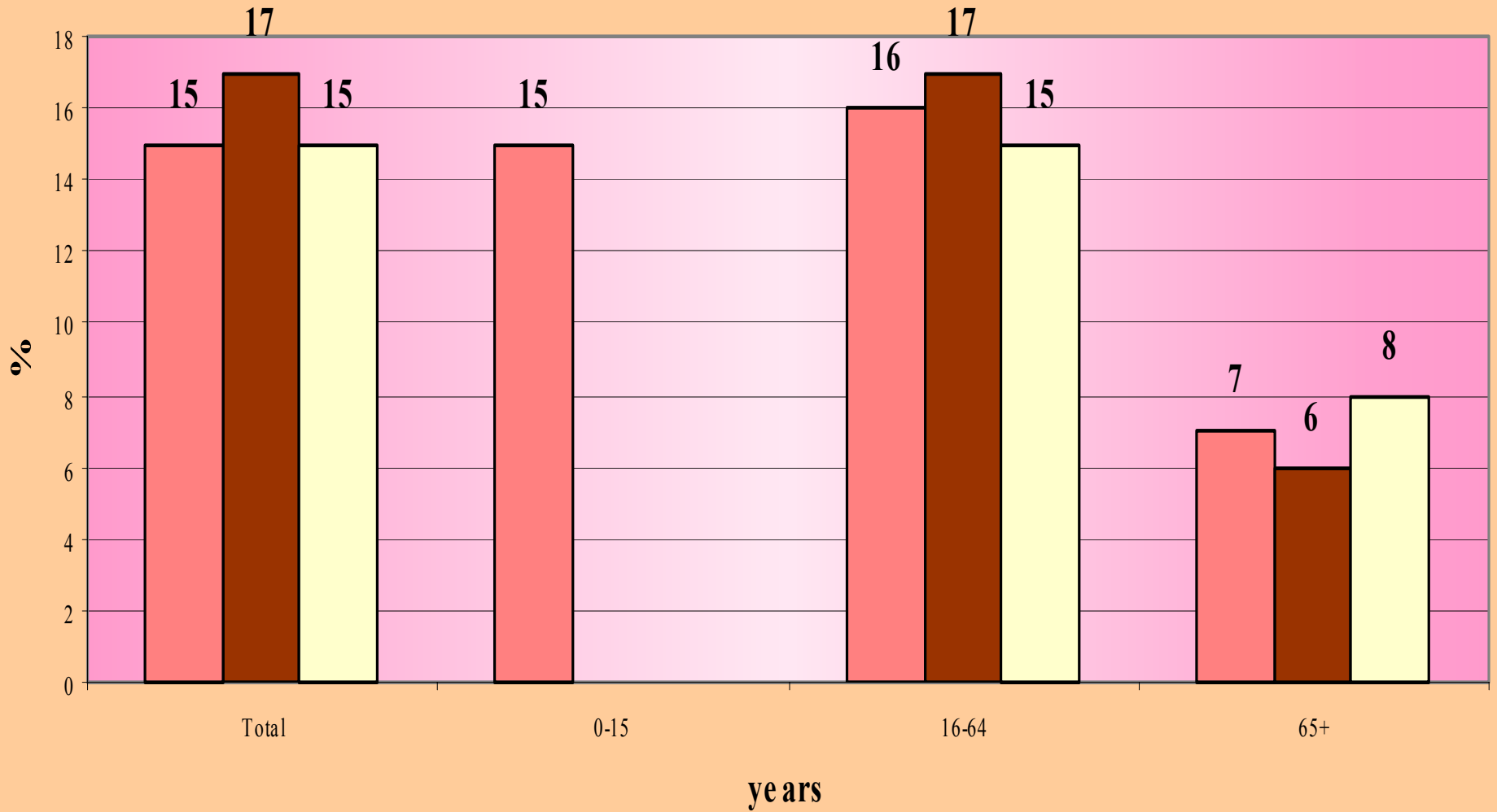
Gini coefficient: 25; Income quintile ratio S80/S20: 3.4

At-risk-of-poverty rate by age and gender



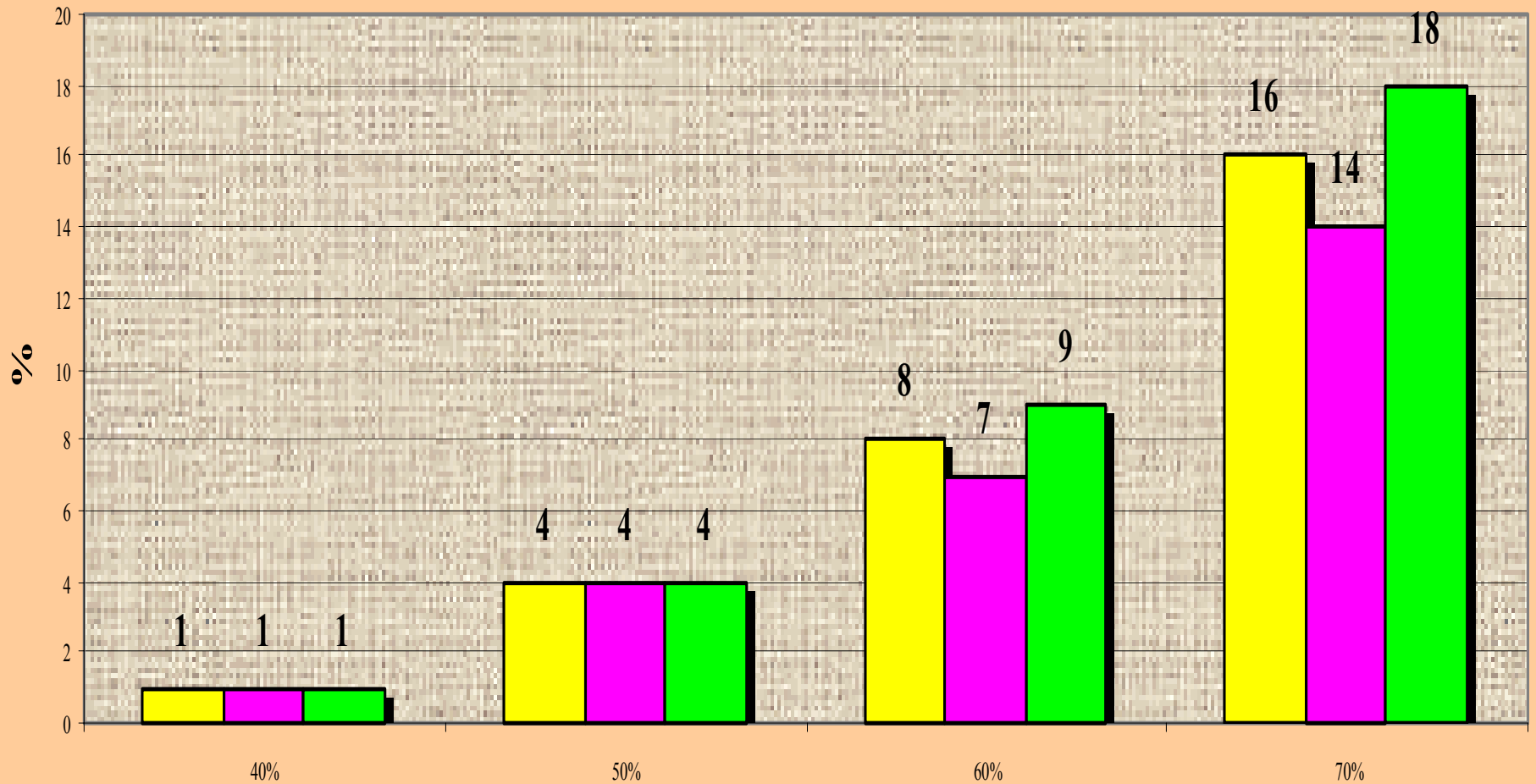
■ Total ■ Men ■ Women

Relative median at-risk-of-poverty gap by age and gender



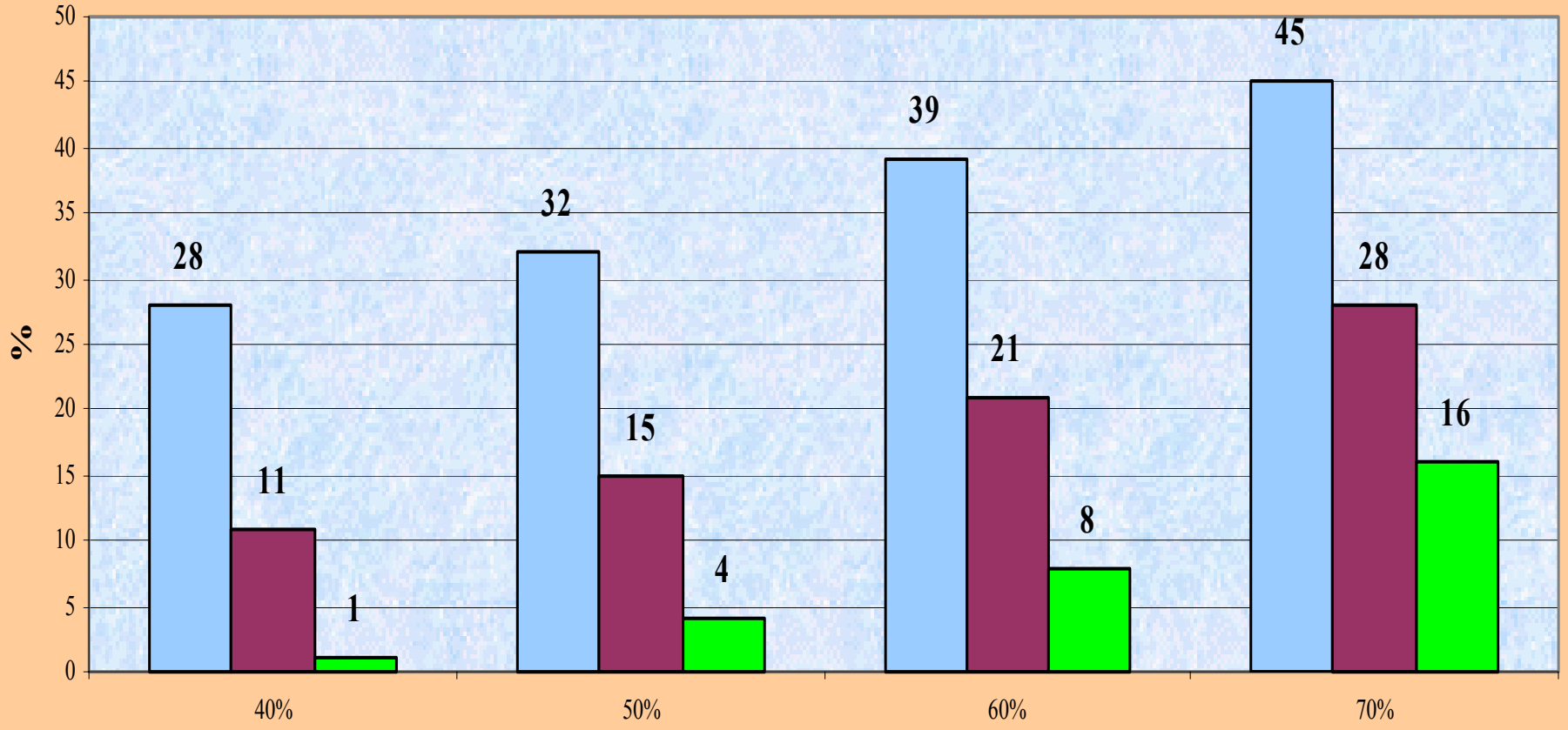
■ Total ■ Men □ Women

Dispersion around the at-risk-of-poverty threshold by gender



■ Total ■ Men ■ Women

Dispersion around the at-risk-of-poverty threshold by the effect of social transfers

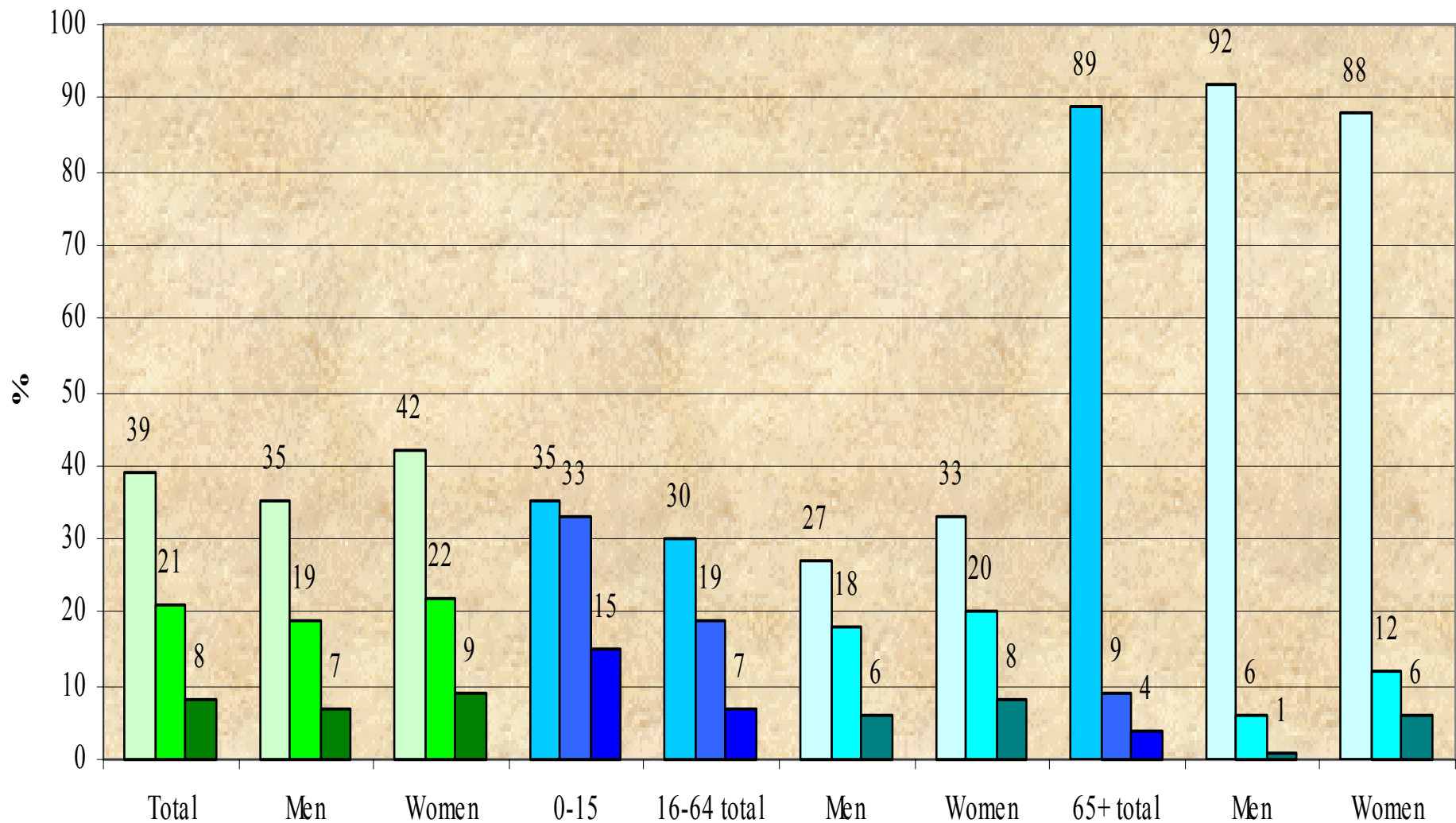


■ excluding social transfers

■ including only pensions

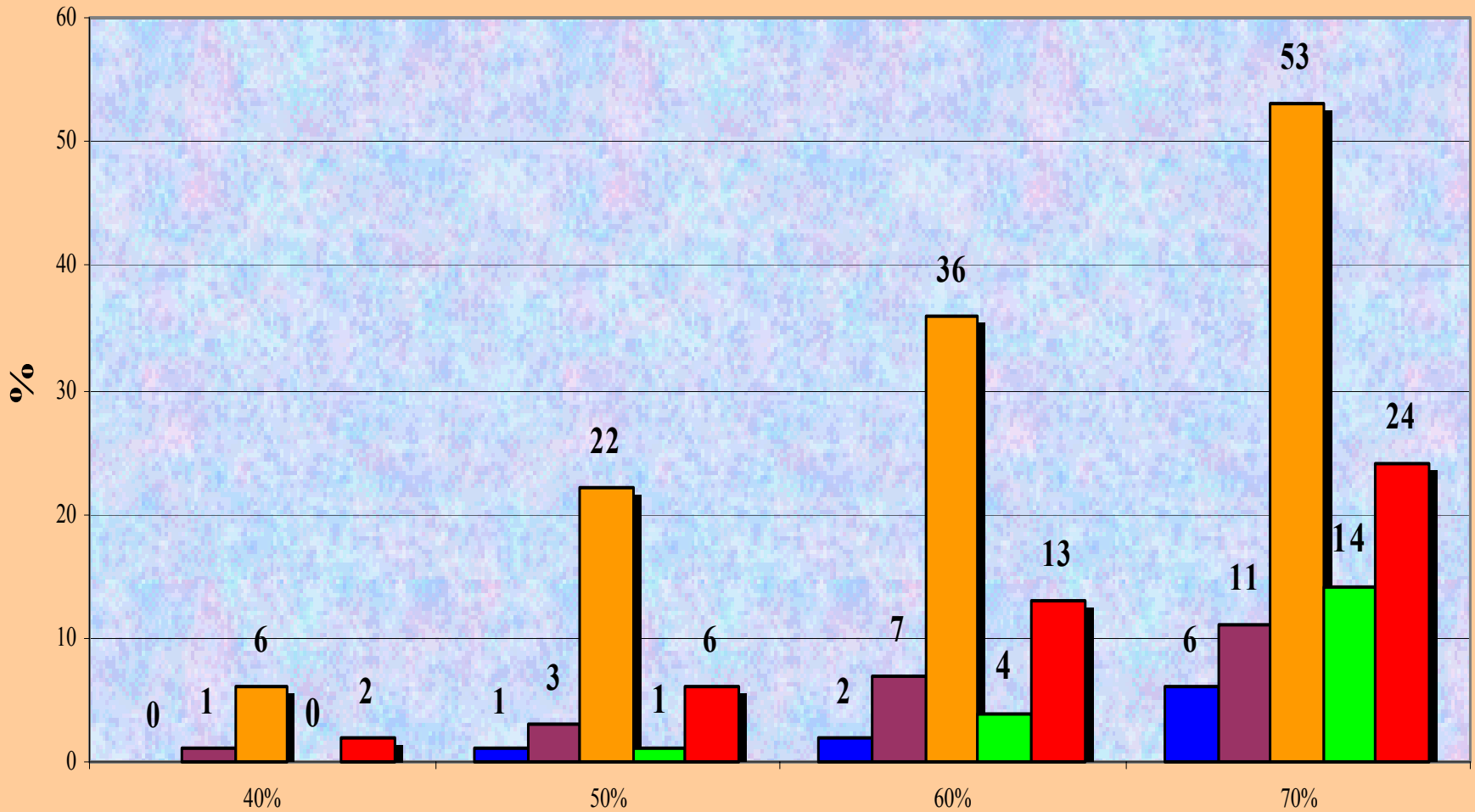
■ including all social transfers

At-risk-of-poverty rate before and after social transfers



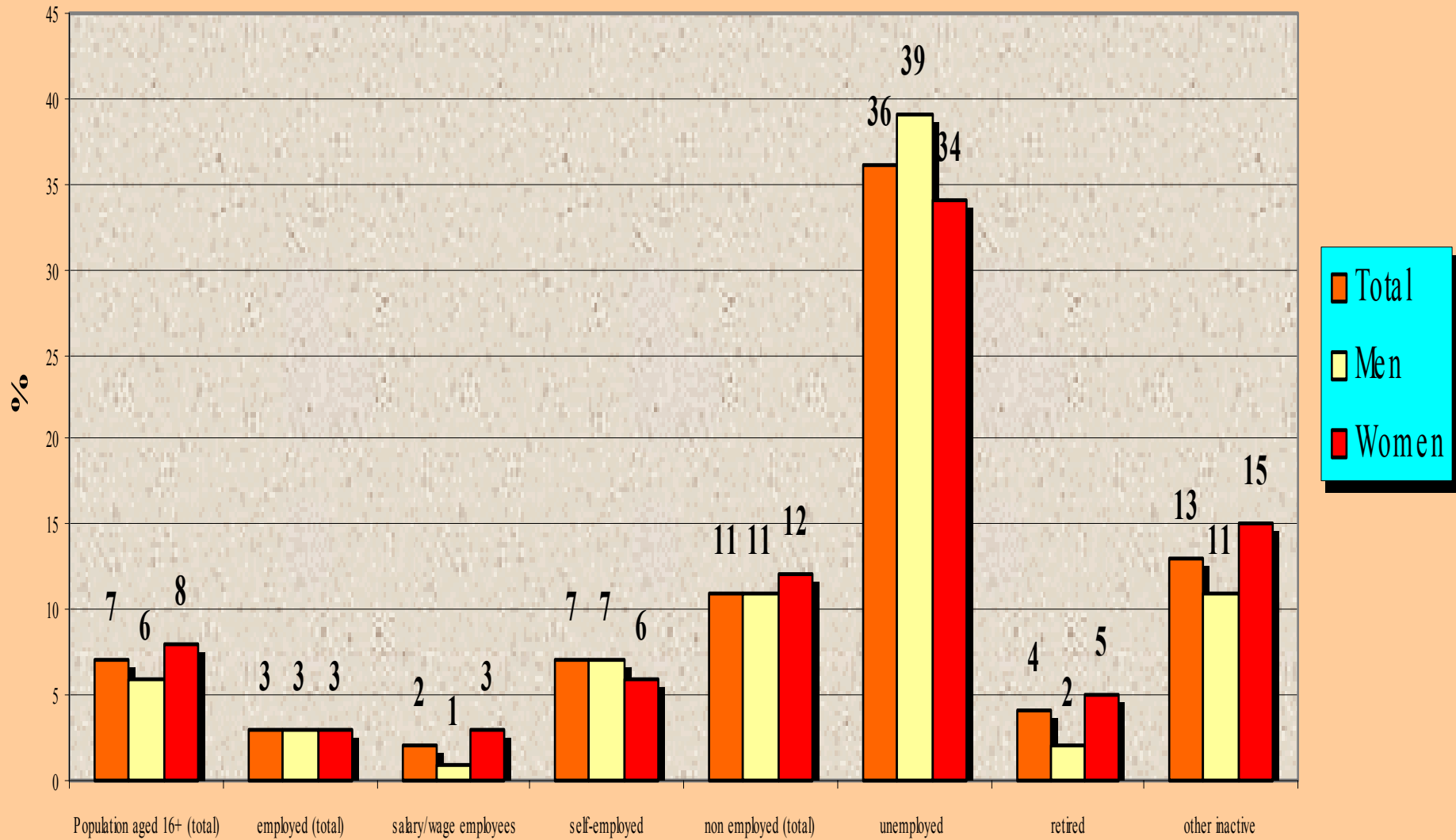
█ excluding all social transfers
 █ after including pensions
 █ excluding other social transfers
 █ after including pensions and all other social transfers

Dispersion around the at-risk-of-poverty threshold by most frequent activity status

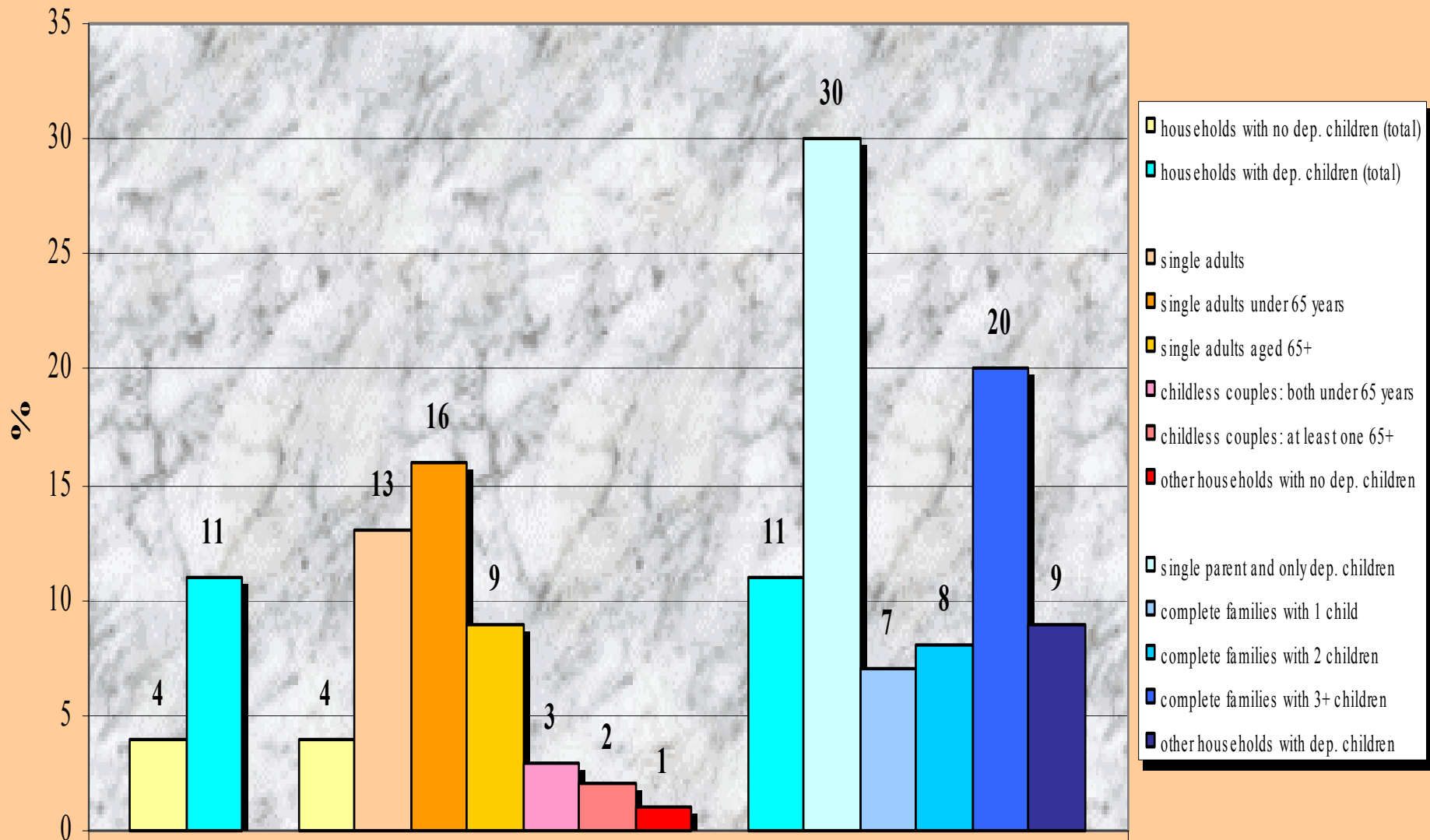


■ salary/wage employees
 ■ self-employed
 ■ unemployed
 ■ retired
 ■ other inactive

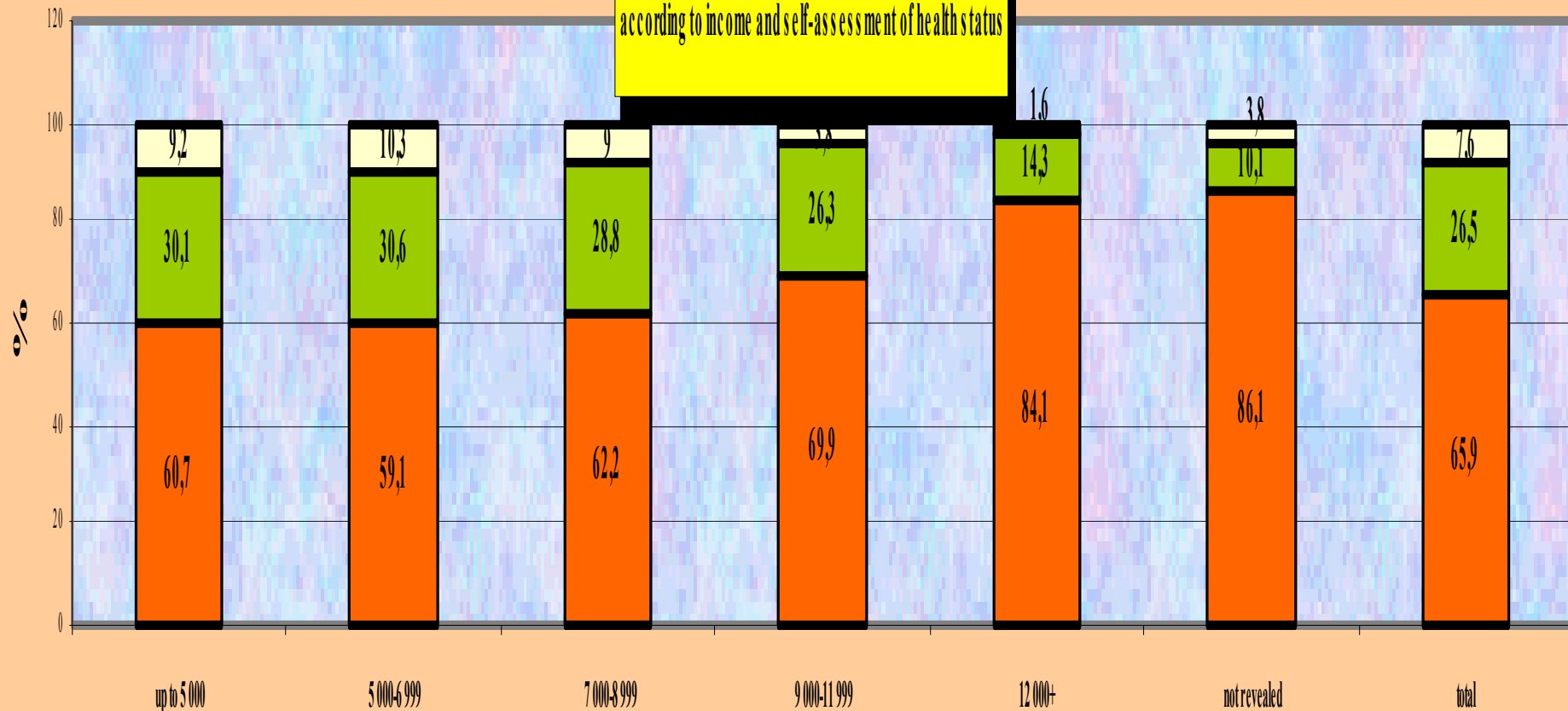
At-risk-of poverty rate by most frequent activity status



At-risk-of-poverty rate by household type



Composition of the set of male respondents
according to income and self-assessment of health status



Income per one member of household in
CZK a month



5000 CZK: 306 PPS 7000 CZK: 428 PPS 9000 CZK: 551 PPS 12000 CZK: 734 PPS

Composition of the set of female respondents according to income and self-assessment of health status

